

1. Right click the drive where you will get the message 'invalid location' when backup to it, and select Properties. Then switch to Security page to check if current login user has full permission to access the drive here. If you even cannot find the user in the list, the following steps will guide you how to add it.

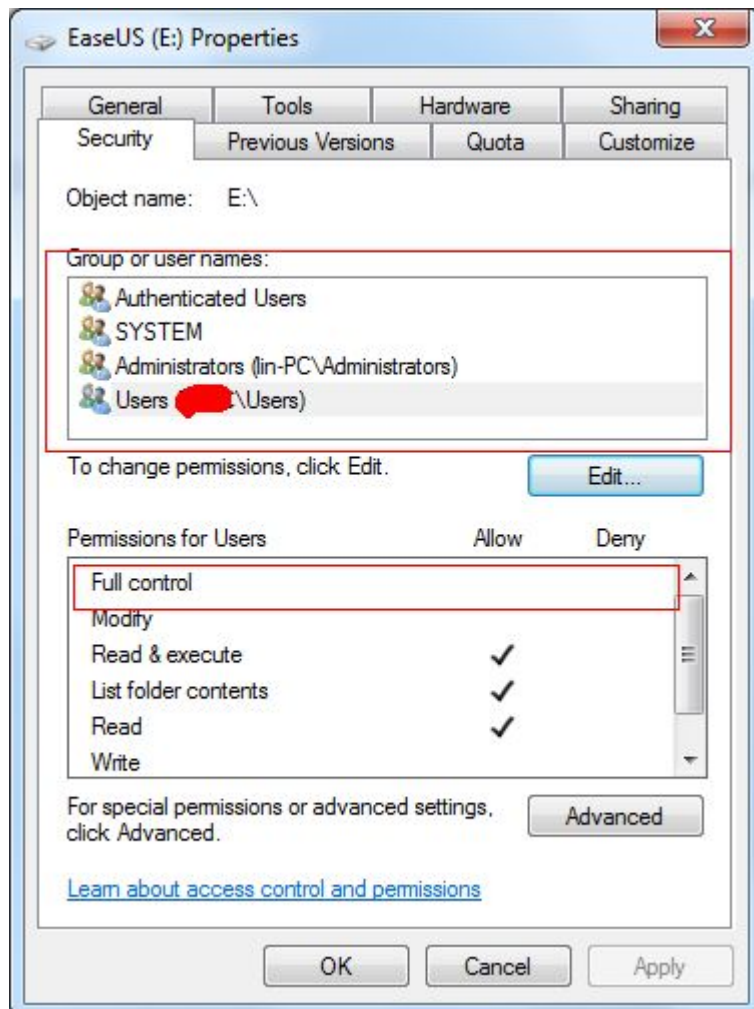


Figure 01

2. Click Edit in figure 01, and following the numbers in figure 02 to open the box for adding new user. Please find the user you login system with and add it there.

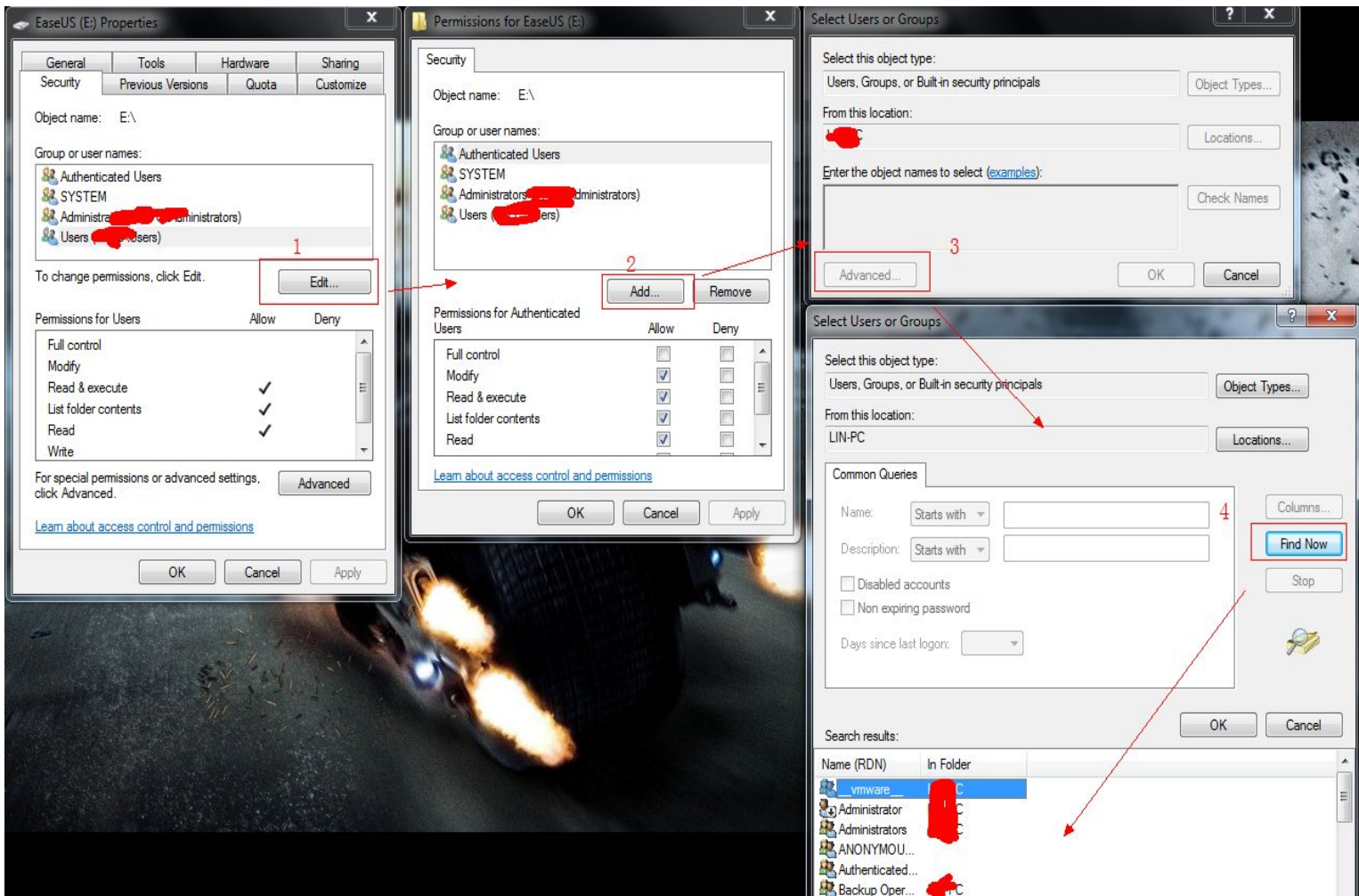


Figure 02